



HTI International Romania

Pipelines and fittings for
water and gas installations

GENERAL PRODUCTS
PRESENTATION.

TECHNICAL SPECIFICATIONS

www.hti-romania.ro

1921 - Cordes & Graefe oHG is founded in Bremen, having the main field of activity the sales of pipes and sanitary installations

1939 - Wilhelm Gienger GmbH is developing its activity in München

1975 - GC Sanitär-und Heizung-Handels-Contor GmbH is formed in Bonn as a result of the partnership of the following companies: Cordes & Graefen Bremen, Gienger München, Gienger Kornwestheim, Gottschall & Sohn Düsseldorf, Pfeiffer & May Karlsruhe;

1994 - Because of the spectacular development of the water, sewerage and industrial and civil engineering sales department, HTI GmbH & Co. Handels KG is founded as a part of the GC-Group.

THE GC-HTI GROUP: HISTORY AND STRUCTURE



Currently the GC Group consists in :



THE GC-HTI GROUP: HISTORY AND STRUCTURE

- 100 distribution companies located in Germany;
- Several distribution companies located abroad (Romania, Austria, Poland, Ukraine, Czech Republic, Hungary, Bulgaria, Netherlands, Malaysia)
- Around 12.000 employees
- More than 1.000 delivery trucks;
- Over 250.000 sqm storage areas;
- 40.000 items in warehouses
- 900.000 items in the database



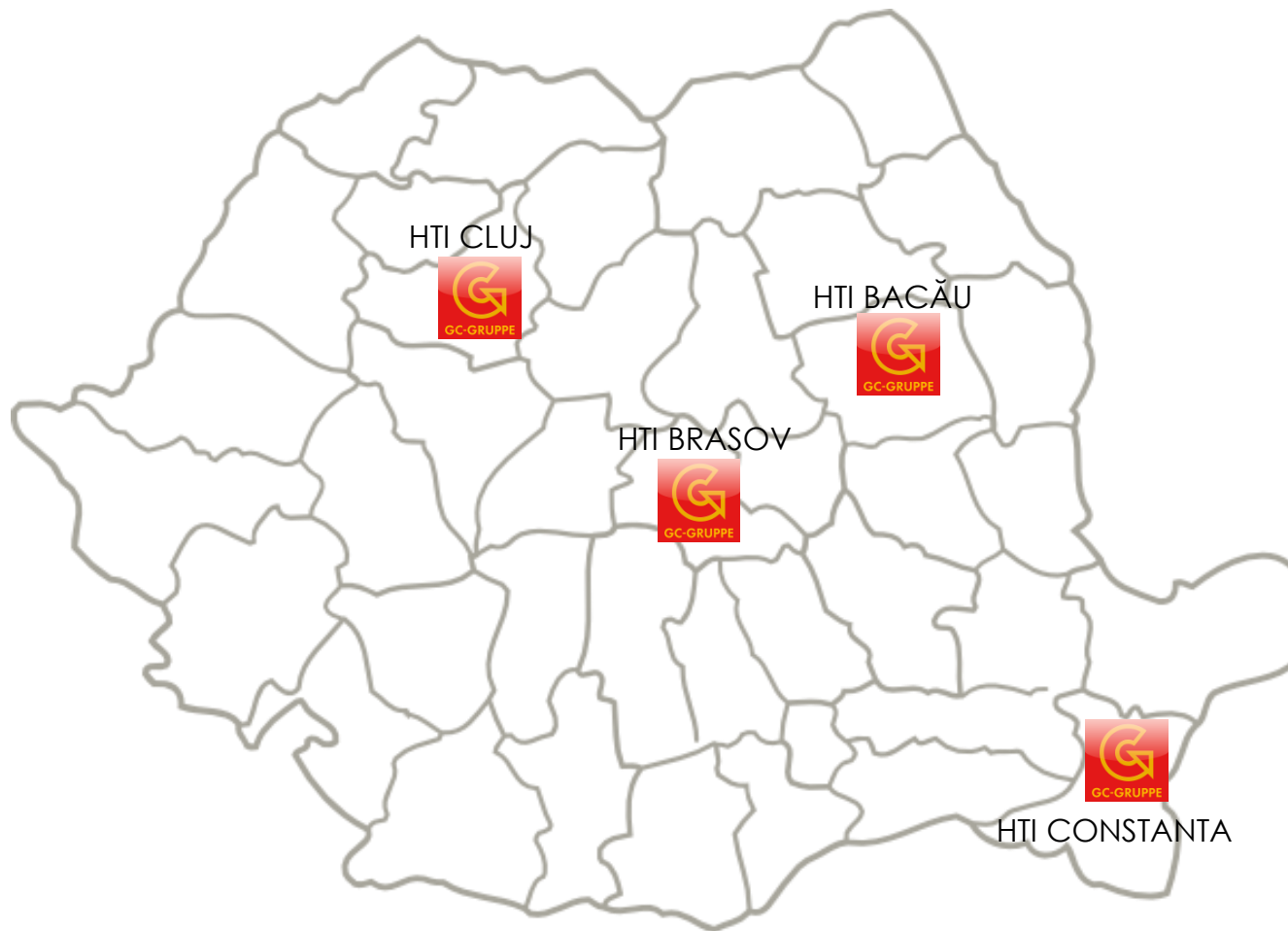
HTI ROMÂNIA

HTI ROMÂNIA is a daughter company of GC-HTI Group, the main distributor in Germany of infrastructure material for the residential and industrial development.

HTI ROMÂNIA is a distribution company offering a diversified range of pipelines, pipe fittings and accessories for infrastructure and sewerage systems, industrial valves for water and gas supply, distribution and water treatment.

As distributor, **HTI ROMÂNIA** covers the whole range of products and also provides professional and complete solutions for the water supplies and sewage applications.





HTI INTERNATIONAL ROMANIA

HTI BRAȘOV

Str. Carpaților nr.60
Obiectiv 96, etaj 1
tel +40 368 440 745
fax +40 368 440 746

HTI CLUJ


Str. Libertății nr.7-15
Apahida, jud. CLUJ
tel.+40 0264 232 799
fax.+40 0264 232 797

HTI BACĂU

Str. C.Porumbescu,nr.27A
Tel.+40 234 555 002

HTI CONSTANTA

B-dul. Aurel Vlaicu 191 C
Tel.+40 341 425 197
Fax: +40 341 425 194



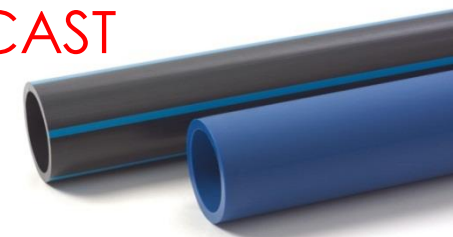
WATER DISTRIBUTION SYSTEMS



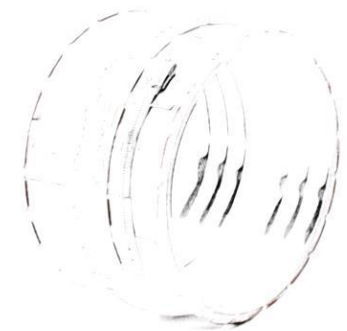
www.hti-romania.ro

PIPES AND FITTINGS FOR WATER DISTRIBUTION SYSTEMS MANUFACTURED :

PE / OL / INOX / DUCTILE IRON CAST



- Variable range of sizes
- Also for above ground and underground applications
- Proficiency at high static and dynamic forces
- Easy to install and handle
- High durability
- Protective against corrosion
- High sealing efficiency
- Low amount of couplings



PE FITTINGS

- Electrofusion PE fittings, buttwelding fittings
- Compression fittings
- Couplers, saddles, spigot fittings



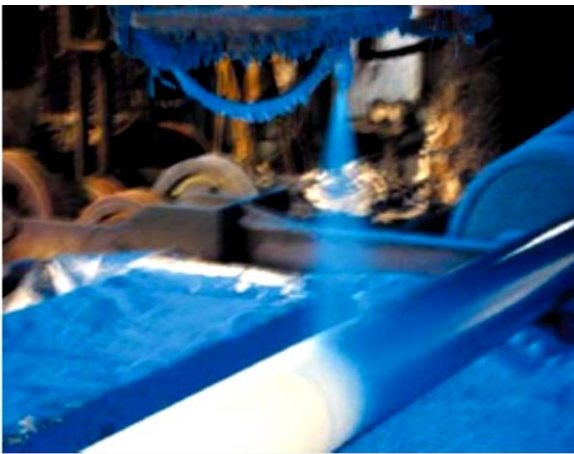
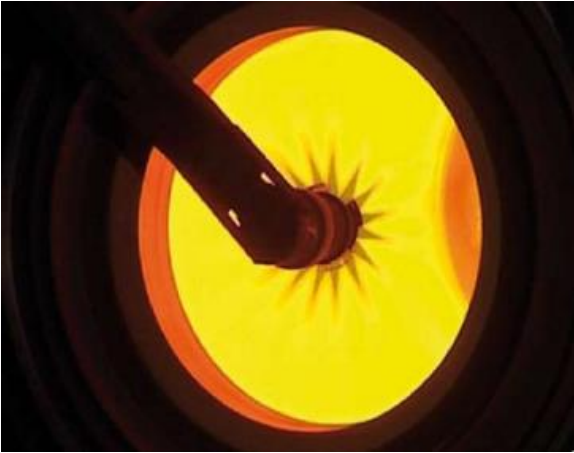
Ductile iron has a coefficient of tensile strength more than double in comparison with usual cast iron. (420Mpa for ductile iron in comparison with 180Mpa for usual cast iron)

DUCTILE IRON PIPES ADVANTAGES

- High durability
- Flexible to earth movements
- Easy to install and handle
- Corrosion resistant and against chemical contamination
- Diversified range of dimensions
- Designed for both above ground and buried applications

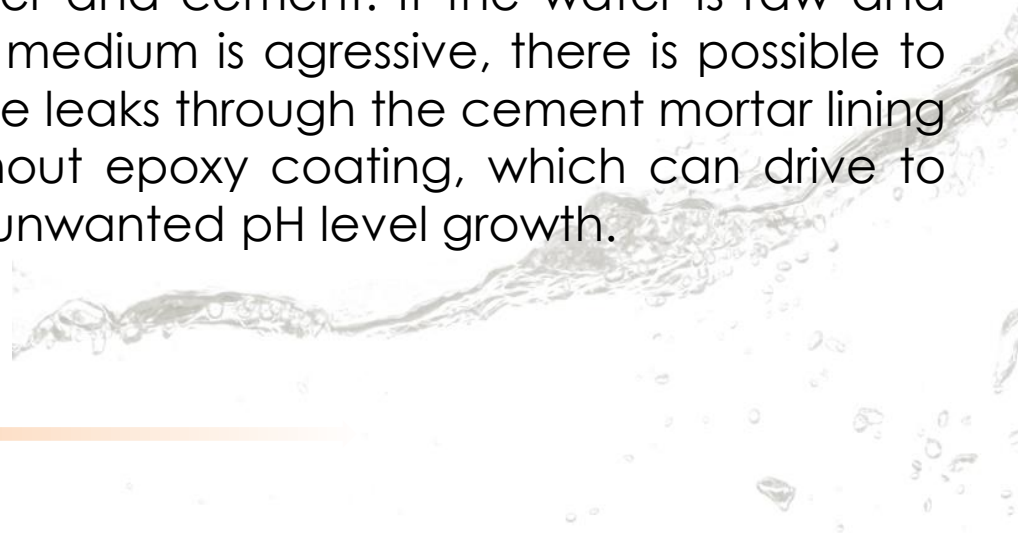


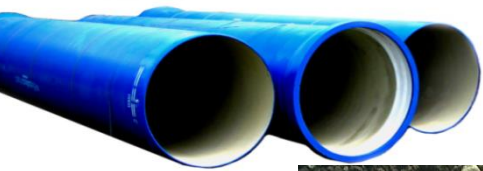
DUCTILE IRON PIPES: INSIDE AND OUTSIDE



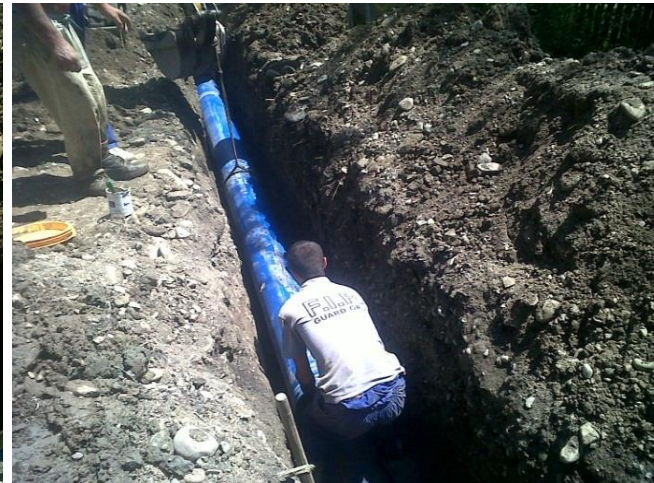
The cement mortar lining ensures a physical barrier against water which also has an anti-corrosion effect. The interior cement mortar lining also ensures a balanced pH which prevents against corrosion.

The interior protective cement mortar lining reduces the direct interaction between water and cement. If the water is raw and the medium is aggressive, there is possible to have leaks through the cement mortar lining without epoxy coating, which can drive to an unwanted pH level growth.





PIPES DUCTILE IRON PIPES





APPLICATIONS

- Potable water trunk mains
- Distribution mains
- Raw water mains
- Sewage pumping mains
- Gravity sewers
- Drainage
- Pump stations
- Process and treatment works
- Bridge crossings
- Fire mains
- Ash and slurry handling
- Piling applications for ground stabilisation
- Road crossings

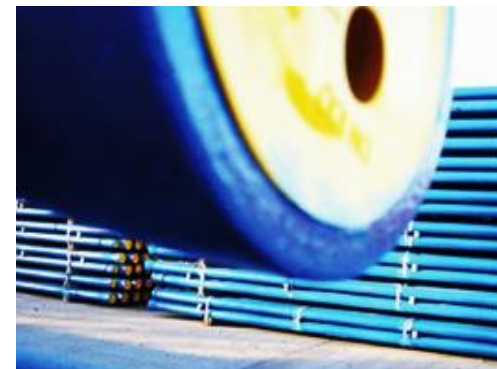


PRODUCT RANGE

HTI Romania distributes pipes and fittings in the range DN 80- DN 1000 in accordance with the european standards ISO2531, BS EN 545, BS EN 598, IS 8329 / IS 9523.

RANGE OF PIPES

- Socket and spigot flexible push-fit joint
- Restrained flexible weld bead joint
- Mechanical flexible joint
- 'Tied' socket and spigot joint
- Welded flange pipes



RANGE OF PRODUCTS

Range of dimensions– between DN 80 and DN 1000 mm,
Available for both underground and above ground applications.

- Bends
- Even tees
- Uneven tees
- Cone-shaped
- Reducing pieces
- Blind flanges

All fittings between DN 80-1000 are covered with epoxy coating according to BS EN 14901.

FITTINGS



COMPATIBILITY WITH THE PIPE SYSTEM

The epoxy coated fittings are properly manufactured to form a whole system with the pipes. The epoxy coating satisfies all extreme soil conditions, without any other additional protection.



RANGE OF PRODUCTS



The coating provides a barrier effect, the blue cover for water fittings and red colour for sewage are perfectly adaptable for moist soil conditions.



VALVES,GATE VALVES HYDRANTS

- Gate valves, knife gate valves
- Butterfly valves, non-return valves,
- Air valves, control valves ,penstock valves and penstocks
- Standpost and underground hydrants
- Manual, hydraulic and electric actuation.



KNIFE GATE VALVES

- Dimensions range available from DN 50 to DN 2000 (customised sizes available on request)

APPLICATIONS

- Pump stations
- Sewage applications
- High pressure applications
- Chemical industry
- Food industry
- Mining



BUTTERFLY VALVES

- Dimensions available from DN 50 to DN 2000 (customised sizes available on request)

APPLICATIONS

- Hydroelectric power plants, used as safety device for turbines
- High pressure applications
- Water basins, reservoirs, dams

ACTUATIONS

- With handwheel
- With electric actuator
- With pneumatic actuator



APPLICATIONS

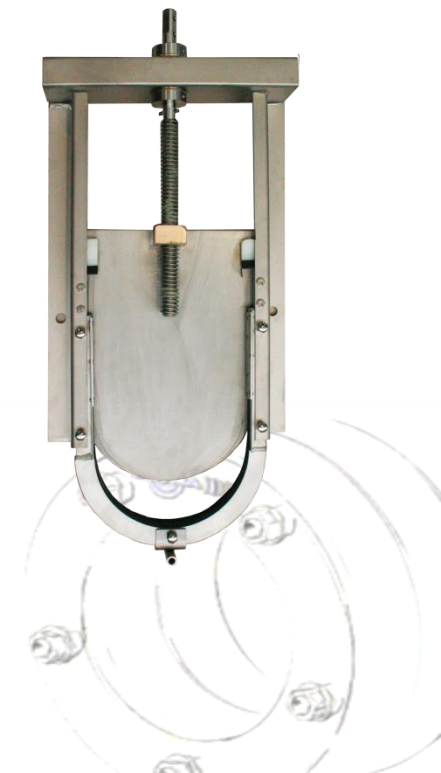
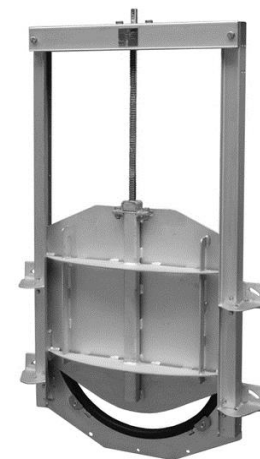


PENSTOCKS DN 150 up to DN 2200

- Penstocks with sealing on the plate
- Penstocks with sealing off the plate
- Penstocks with rectangular flange mounting
- Penstocks with plate guided in sealing
- Telescopic spindles
- Manual, pneumatic or electric actuators

APPLICATIONS

- Chemical industry
- Applications for risky fluids retaining
- Protection against flooding
- Fluid control





CONTROL VALVES

- Range of dimensions from DN 150 to DN 2000

FUNCTION

- Flow control
- Pressure control

APPLICATIONS

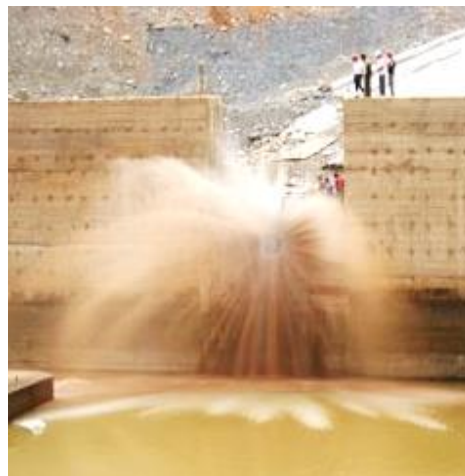
- Dams and water adductions, hydro electric power plants
- Water reservoirs and basins

ACTUATIONS

- Manual actuation
- Electric actuation
- Hydraulic actuation



APLICATII





SEWAGE AND DRAINING SYSTEMS



HTI

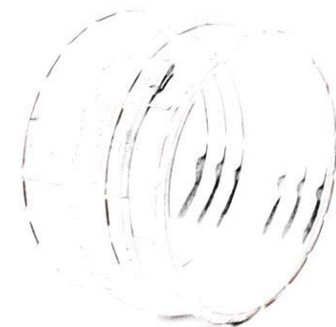
www.hti-romania.ro

PIPES FOR SEWAGE SYSTEMS

VITRIFIED CLAY PIPES/CORRUGATED PE /PVC



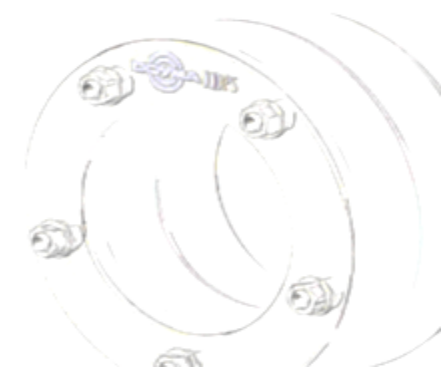
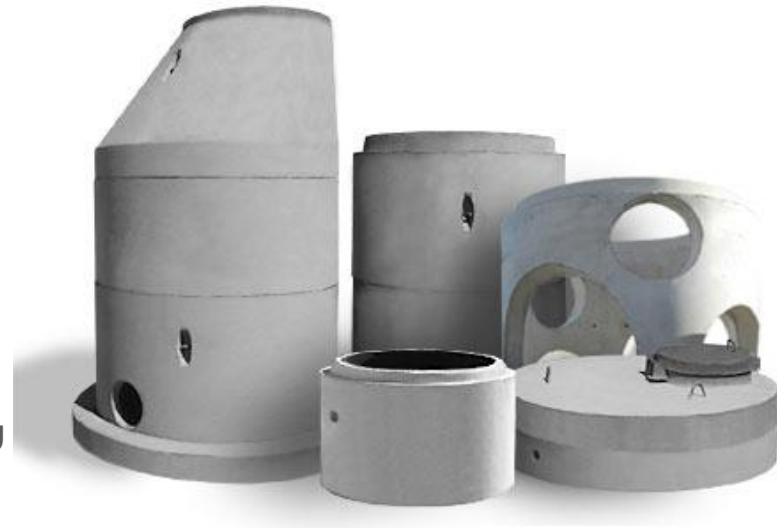
- Variable range of sizes
- Also for above ground and underground applications
- Proficiency at high static and dynamic forces
- Easy to install and handle
- High durability
- Protective against corrosion
- High sealing efficiency
- Low amount of couplings





PE/PP/CONCRETE INSPECTION CHAMBERS

- Industrial and public inspection chambers
- Housekeeping inspection chambers
- Cămine guri de scurgere
- Cămine pentru pompe în rețelele de presiune
- Cămine cu rupere de pantă
- Cămine pentru sisteme de conducte închise și sisteme cu conducte duble
- Cămine disipatoare de energie
- Cămine pentru decomprimare



CORRUGATED PIPES

BENEFITS:

- Without low cost raw recycled materials.
- High performance due to low wearing, neat surface
- Guranteed minimum wall thickness
- High tightness even in overpressure conditions up to 0,5 bar
- Allowable bending up to 30%, without permanent deterioration (safety rate 5)
- Long term optimal durability





VITRIFIED CLAY PIPES

Product range:

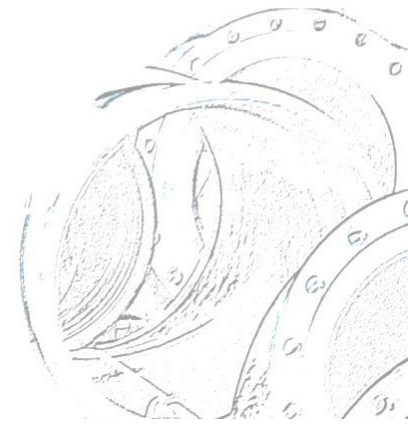
- open trench clay pipes
- microtunneling clay pipes (trenchless applications)
- drainage clay pipes
- "T" type pipes

- Joints for inspection manholes, for instance in the form of built-in pieces and reciprocating pieces.

- Connections joints (vitrified clay push-in sockets)
- Junctions in 90° or 45° and in various versions
- Bends at various angles
- Adaptors to be used as enlarger or reducer pipes
- Double sockets
- Vitrified clay caps
- Vitrified clay gullies



FITTINGS



ABRASION RESISTANT

Accordingly to the relevant tests, the vitrified clay pipes are not affected by corrosion.

During the abrasion process, the material loss is very low, much lower than the approved standards EN 295 (0,2 up to 0,5 mm).

Erosion depth for vitrified clay pipes is 0,08 up to 0,1 after 100.000 circles.

HIGH TEMPERATURES RESISTANCE

Vitrified clay pipes are often used in industrial applications, due to resistance at high temperatures. The vitrified clay pipes and fittings have been tested at temperatures up to 70° C, in different conditions, accordingly to EN 295. Even at higher temperatures, vitrified clay pipes have proved to be very resistant.

Material	Endurance (years)
Vitrified clay	100-130
Concrete	67-90
Brick	80
PVC	25-30
HDPE	25-50
Cement	50
Steel	50



RESISTANT TO HIGH LOADINGS

The resistance of vitrified clay pipes has been significantly increased. In the same time, the large diameters such as DN 700, DN 800 up to DN 1400 are manufactured with enhanced wall thickness and better breaking resistance. The mechanical resistance is kept for long term, up to 100 years, unlike other synthetic material.



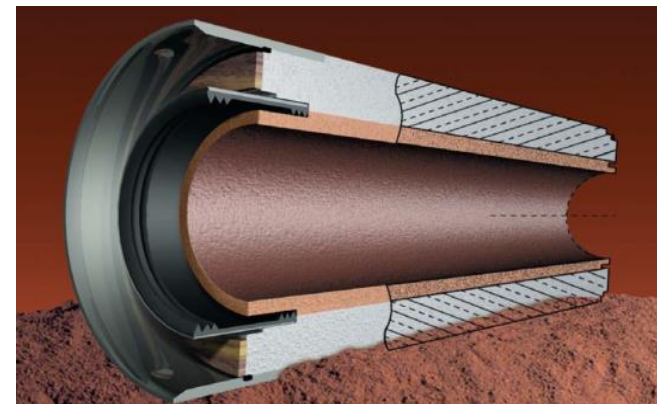
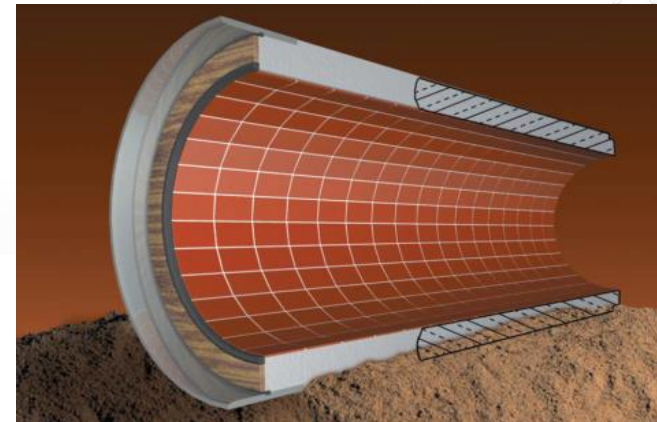
PERFECT SEALING:

Modern connection systems are providing perfect tightness along with maximum flexibility. The most used sealing systems are rubber joints, up to DN 200, or polyurethane for DN 200 up to DN 800

NO BENDING:

The vitrified clay pipes are rigid by construction, but also very flexible at joints. The vitrified clay pipe systems do not suffer any bendings during usage. Flexible pipes require additional excavation, additional efforts, constant monitoring and further compacting.

**ONLY 1% / YEAR
DETERIORATION PERCENTAGE!**





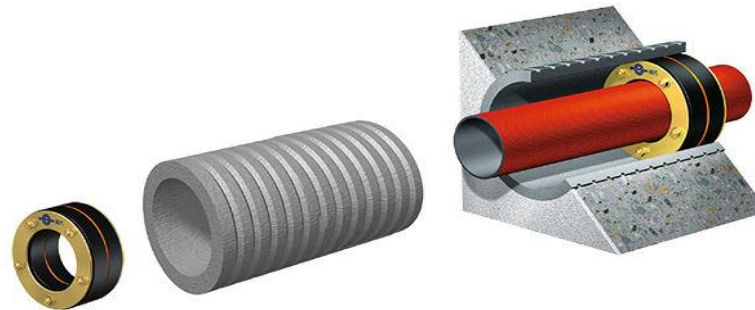
ACCESSORIES FOR VARIOUS APPLICATIONS



www.hti-romania.ro

THROUGH WALL SEALING SYSTEMS

- Service ducts, comprising sleeves and gasket inserts
- Secure and lasting watertight penetrations for pipes and cables through walls, ceilings and floors
- Cable duct systems
- Fire protection systems
- Full and customisable range of products
- High adaptability based on the customers request



FITTINGS

- PVC,PP fittings and accesories
- Vitrified clay fittings and accesories
- PE fittings – Electrofusion fittings,spigot fittings, compression fittings
- Tapping saddles,clamp saddles
- Connections



COUPLINGS AND ADAPTORS



- Restraint and non restraint couplings DN 50- DN 300
- Pipe couplers and adaptors
- Flexible couplings
- Sewer saddles
- Lateral connectors
- Flange adaptors
- Mechanical connections



DISMANTLING JOINTS

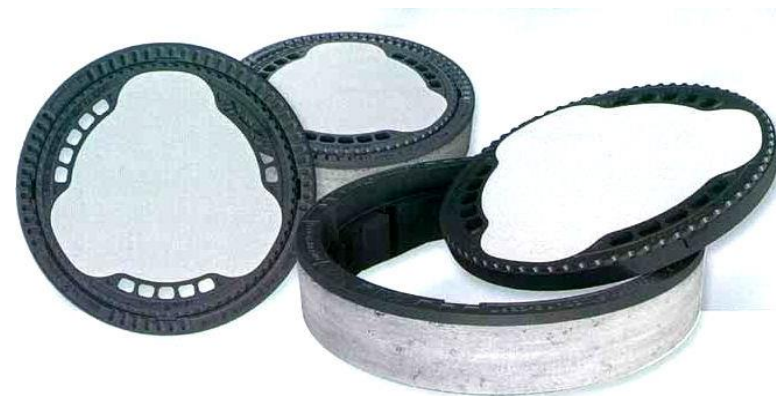


- Suitable for transmission of pipe forces
- For easy installation and dismantling of valves
- Inside and outside epoxy coating
- For longitudinal adjustment in flanged pipe systems.
- provide greater flexibility to both the planning and installation stages of flanged pipework systems





MANHOLE COVERS



- Manhole covers classes: A15, A50, B125, C250, D400, E600 and F900
- Manhole covers for separators
- Manhole covers for cables
- Gratings





COMPOSITE COVERS

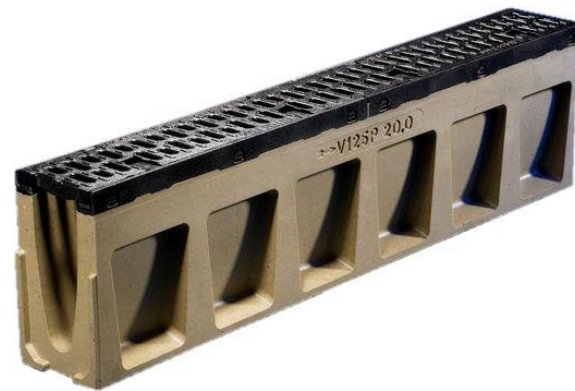


- The composite material is used for manufacturing high resistance manhole covers of various sizes.
- The composite material can be used instead of traditional materials which are more subject to wear and tear.
- With 70% lighter than usual manhole covers
- Resistant to corrosion
- Fully customisable, reduces noises, electric insulator



CHANNELS AND DRAINAGE SYSTEMS

- Drainage systems
- Universal channels
- Concrete channels
- Steel channels
- Heavy duty channels
- Safety channels
- Slot channels
- Facade channels
- Shallow channels



GEOSYNTHETICS:

- Woven geotextiles
- Non woven geotextiles
- Geogrids for soil reinforcements
- Tridimensional geogrids
- Drainage geocomposites
- HDPE geocells
- Bentonitic mattresses
- Geosynthetics for agriculture

